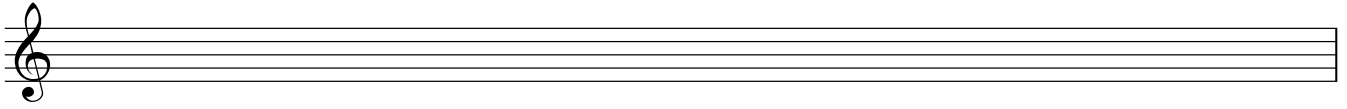


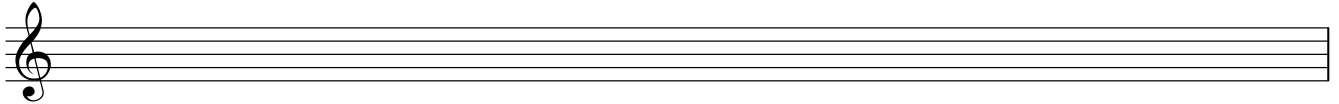
Major Scales & The Relative Minor

1. Write down a C Major scale ascending in crotchets
Add a 4/4 time signature at the start & barlines where needed.
Put in the distance between each note (in Tones and Semitones)

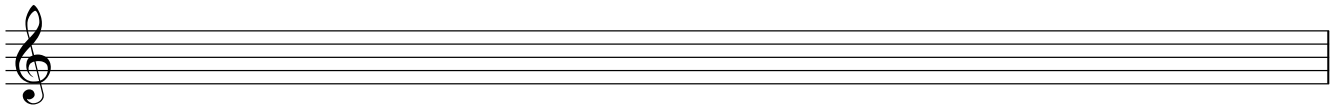


C - D - E - F - G - A - B - C

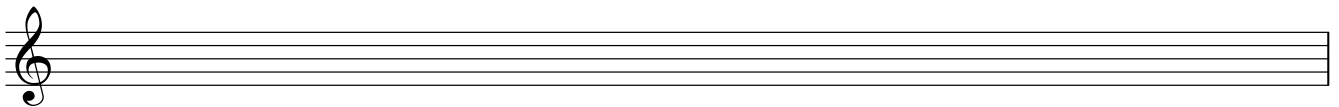
2. Write down the Relative Natural Minor Scale of C Major ascending and descending in crotchets
Add a 4/4 time signature at the start & barlines where needed.



3. Write down the Melodic Minor Scale starting on A ascending & descending in crotchets
Add a 4/4 time signature at the start & barlines where needed.

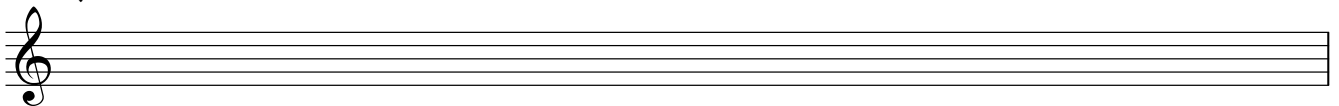


4. Write down the Harmonic Minor Scale starting on A ascending in crotchets
Add a 4/4 time signature at the start & barlines where needed.

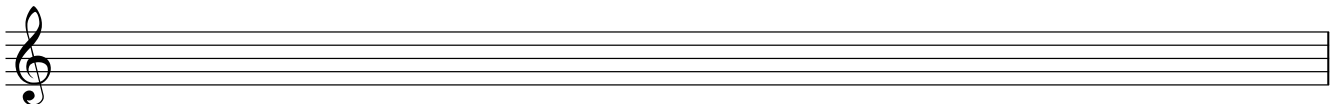


NOW DO THE SAME IN Bb MAJOR (write in the clef, key signature and time signature for each line)

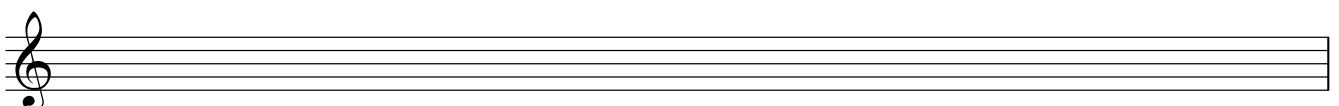
5. The Major Scale



6. The Relative Natural Minor Scale



7. The Melodic Minor Scale



8. The Harmonic Minor Scale

