

NAME:  
DATE:

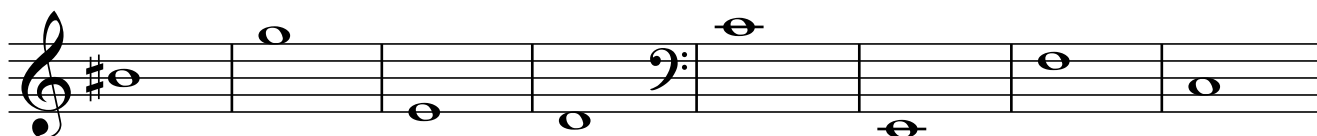
## Mastery 2

1. Write these notes on the treble clef staff below:

middle C   G   Ab   E#   middleC   B   Fb   E#



2. Name these notes:

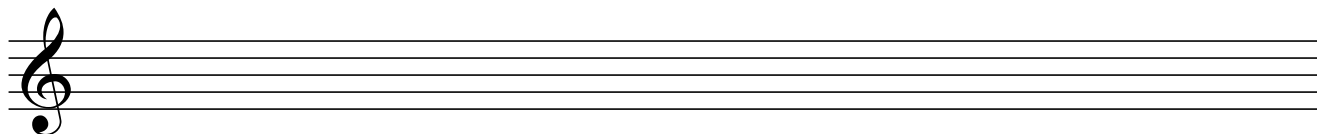


3. Complete these bars using just one note per asterisk:

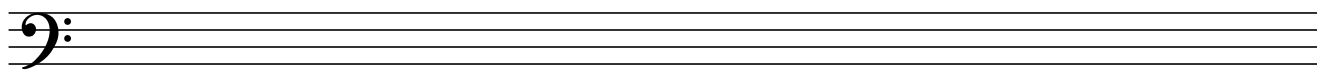


4. What is the order of tones and semitones in a major scale?

5. On the treble clef staff below write a Bb Major scale:



6. On the treble clef staff below write a D Major scale:



6. Identify these intervals:

