

NAME:  
DATE:

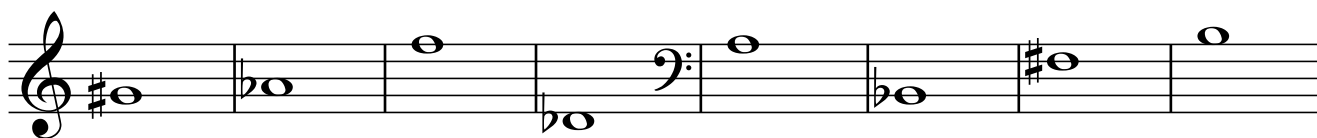
# Mastery 1

1. Write these notes on the treble clef & bass clef staves below:

middle C    E    F#    D    Bb            middle C    A    G#    Eb    B



2. Name these notes:

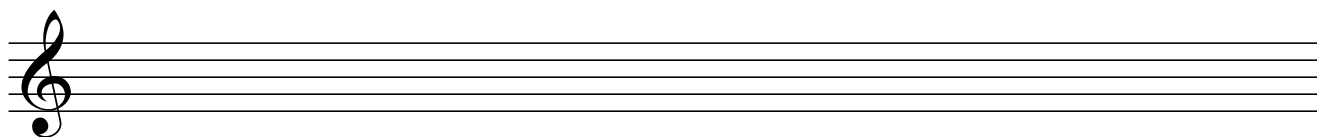


3. Name the note values used:



4. What is the order of tones and semitones in a major scale?

5. On the treble clef staff below write a G Major scale:



6. On the bass clef staff below write an F Major scale:

