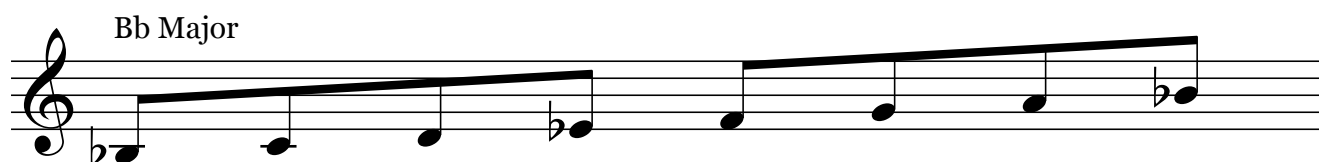
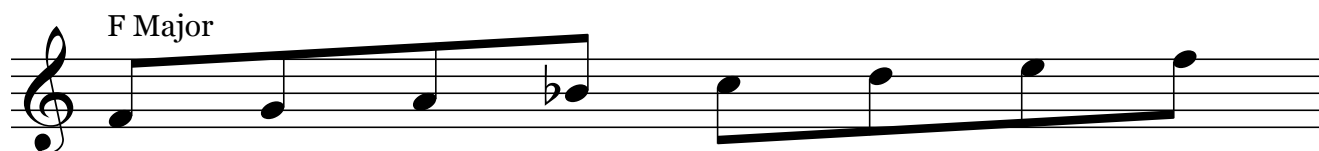


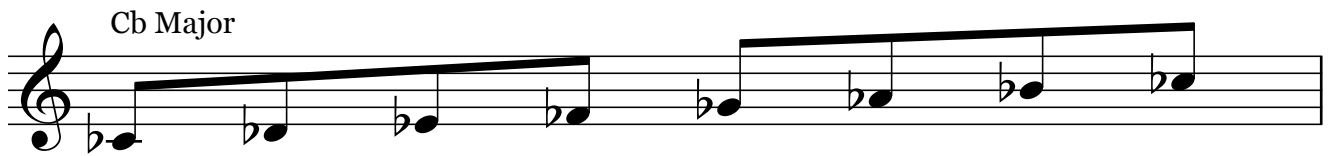
NAME:

DATE:

# All Major Scales ANSWERS

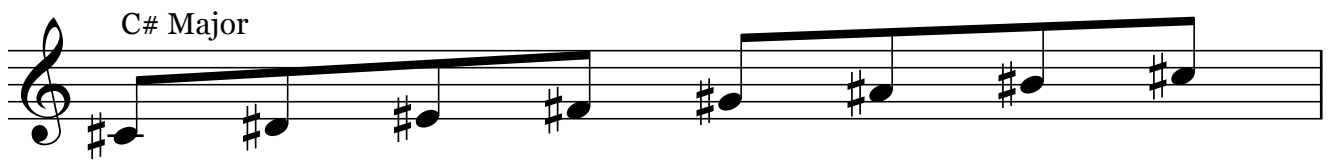


Cb Major



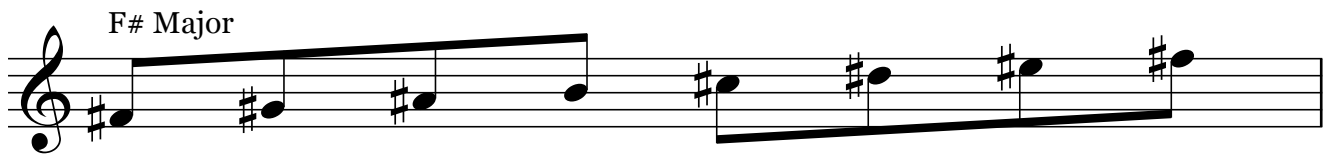
Musical notation for the Cb Major scale in treble clef. The scale consists of two phrases: the first phrase is a half-note scale from Cb to Bb, and the second phrase is a half-note scale from Bb to Cb. The notes are: Cb, Db, Eb, Fb, Gb, Ab, Bb, Cb.

C# Major



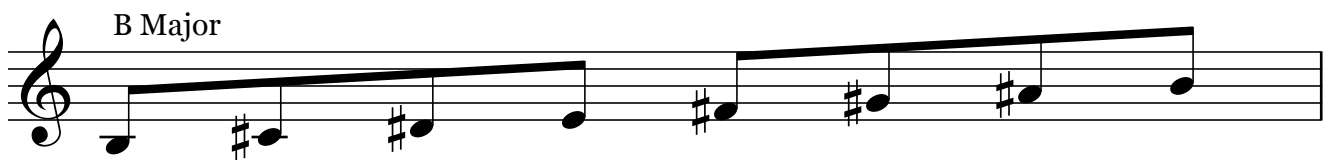
Musical notation for the C# Major scale in treble clef. The scale consists of two phrases: the first phrase is a half-note scale from C# to F#, and the second phrase is a half-note scale from F# to C#. The notes are: C#, D#, E#, F#, G#, A#, B#, C#.

F# Major



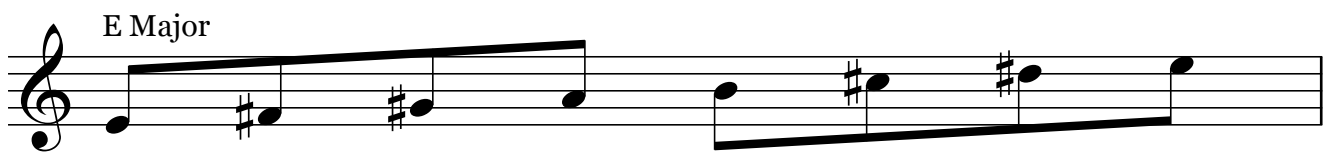
Musical notation for the F# Major scale in treble clef. The scale consists of two phrases: the first phrase is a half-note scale from F# to B, and the second phrase is a half-note scale from B to F#. The notes are: F#, G#, A#, B, C, D, E, F#.

B Major



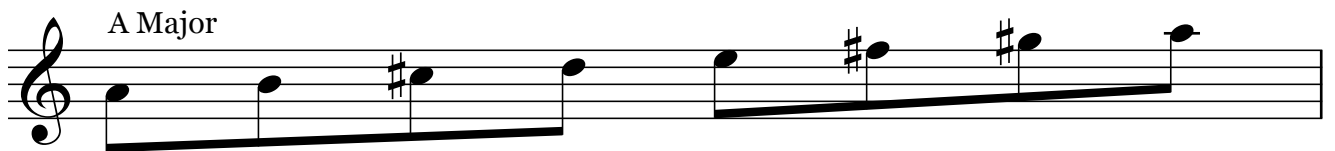
Musical notation for the B Major scale in treble clef. The scale consists of two phrases: the first phrase is a half-note scale from B to E, and the second phrase is a half-note scale from E to B. The notes are: B, C#, D#, E, F#, G#, A#, B.

E Major



Musical notation for the E Major scale in treble clef. The scale consists of two phrases: the first phrase is a half-note scale from E to A, and the second phrase is a half-note scale from A to E. The notes are: E, F#, G#, A, B, C#, D#, E.

A Major



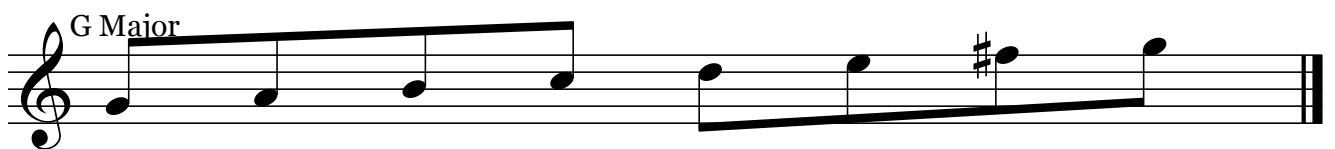
Musical notation for the A Major scale in treble clef. The scale consists of two phrases: the first phrase is a half-note scale from A to D, and the second phrase is a half-note scale from D to A. The notes are: A, B, C#, D, E, F#, G#, A.

D Major



Musical notation for the D Major scale in treble clef. The scale consists of two phrases: the first phrase is a half-note scale from D to G, and the second phrase is a half-note scale from G to D. The notes are: D, E, F#, G, A, B, C#, D.

G Major



Musical notation for the G Major scale in treble clef. The scale consists of two phrases: the first phrase is a half-note scale from G to B, and the second phrase is a half-note scale from B to G. The notes are: G, A, B, C, D, E, F#, G.